



Doing it Right!



MATRIX Cabinet Options



**Whatever Your Storage and Tool Management Needs
MATRIX Series 5 is the Right Solution**

◆ 2 Sizes MAXI and MINI

- ◆ MAXI stands tall with a large capacity, a surprisingly small footprint and ergonomic design
- ◆ MINI can go just about anywhere, super compact, and can sit on a bench or special trolley accessory
- ◆ Each cabinet model is offered as a TOUCH (with touch screen and PC) or POD version, and both versions can connect directly to the network or be linked together

◆ MATRIX DLS

- ◆ An expansion to the successful MATRIX family
- ◆ Economical supplementary storage solution



◆ DLS - Semi Secure



◆ MINI - Secure



◆ MAXI - Secure



Easy to use touch screen

◆ Modular & Scalable

- ◆ No minimum number of drawers required, so you get the exact storage capacity you need
- ◆ Drawers can be easily added
- ◆ Optional Auto-Lock mechanism locks bins when the drawer is returned
- ◆ 16 standard bin types
- ◆ Up to an amazing 198 bins per MAXI drawer and 96 bins per MINI drawer
- ◆ Over 50 drawer options with multiple bin configurations

◆ If You Need to:

- ◆ Optimize stock levels
- ◆ Streamline purchasing
- ◆ Calculate cost per unit (CPU)
- ◆ Guarantee production output
- ◆ Drive down costs
- ◆ Find a storage solution that is an exact fit
- ◆ Make sure only the right tools are used for the job

◆ MATRIX Does It All

Combining a family of flexible automated tool dispensers with the powerful MATRIX-TM tool management software.



MATRIX Vehicle on-site Demo



MATRIX-TM Software

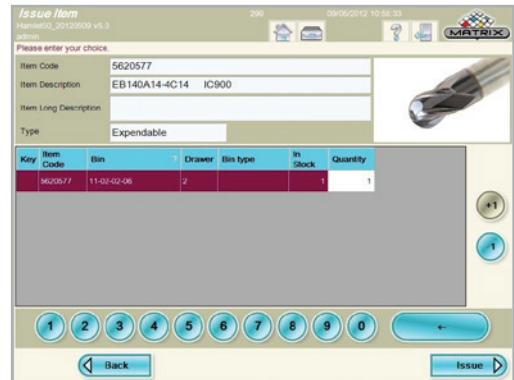


A Powerful Tool Management Software that Drives Productivity and Automates Logistics

◆ TOUCH

An easy to use touch screen driven application to issue, return and administer items

- ◆ Drives all **MATRIX** cabinet models and specified Kardex shuttle models
- ◆ Search items by group, text, numeric, application, picture and favorites
- ◆ Prompts for alternative or related items
- ◆ Links to electronic catalogs and tool selection apps
- ◆ Alerts for stock shortages
- ◆ Multiple sites and cabinets in different locations can run off of one database





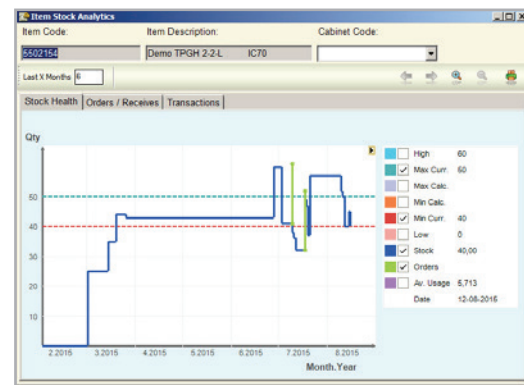
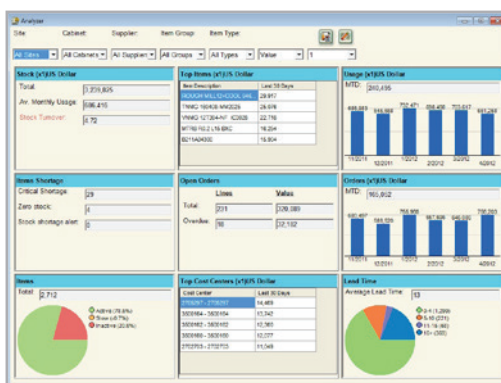
MATRIX on the Production Floor

◆ MANAGE

- ◆ A comprehensive application for the management of your entire stock of tools, gauges & MRO both in a MATRIX cabinet and non-automatic warehouse.
- ◆ Full item maintenance including prices, stock levels, technical information, usage history
- ◆ A complete suite of Standard and Advanced Reports that can be viewed in Excel or Report format, saved as PDF and scheduled to be sent by email at different times
- ◆ Regulate user access to items by part, job, authorization groups and budgets
- ◆ Reduce down time - sophisticated planning engine ensures that items will be ordered and at the point of use on time
- ◆ Analyzer app for quick overview of key performance metrics
- ◆ CPU and Tool Life Calculator
- ◆ Comprehensive management of serial items and gauge calibration
- ◆ Full interface with SAP, Machining Cloud and export/import interface with ERP systems
- ◆ Item Stock Analytics

◆ More about MATRIX-TM

- ◆ Stand Alone software package where automatic cabinet not needed
- ◆ Full usage and cost code statistics for better planning and cost reduction analysis
- ◆ Automatic calculation of re-order points and purchasing
- ◆ Multi-language user interface
- ◆ Kit management to issue lists of items
- ◆ Attach photos and documents to items
- ◆ Manage items for rework
- ◆ Internal transfer of stock between cabinets can be automated
- ◆ Shopping basket for speedy issue of multiple items
- ◆ Alerts are emailed to prompt tasks or important subjects



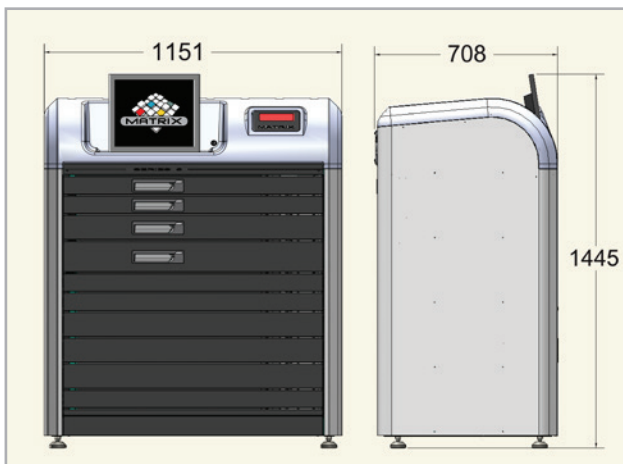
MATRIX Cabinets



◆ MAXI and MINI

- ◆ Manual override in case of power failure
- ◆ UPS (TOUCH versions) – surge protection, power backup and auto restart PC after power failure
- ◆ Barcode reader (TOUCH versions) – other ID devices like RFID, Fingerprint and Magnetic card reader are available
- ◆ Special keyboard tray for easy typing at the machine
- ◆ TOUCH cabinet is supplied with PC, 15 touch monitor, UPS, barcode reader, network switch and management software
- ◆ Network - all cabinet versions can connect directly to the LAN. POD version can also connect to a TOUCH cabinet
- ◆ All cabinet versions are connected to the electrical supply:
110AC +/-10% 4.6A or 220AC +/-10% 2.2A.
- ◆ Cabinet frame and drawers supplied in top-quality industrial grade zinc coated steel
- ◆ Hood and bins supplied in ABS plastic
- ◆ All metal, plastic and electronic parts are made from recyclable material
- ◆ External colors: black (RAL9005) and silver (RAL9116)
- ◆ Manufactured under ISO9001-2000
- ◆ CE & UL/CA certified

◆ MAXI



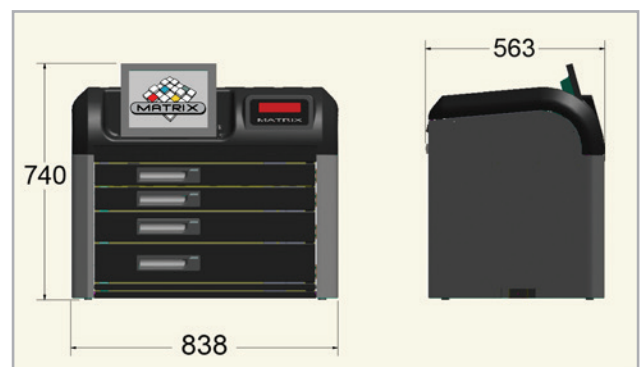
◆ MAXI Specifications

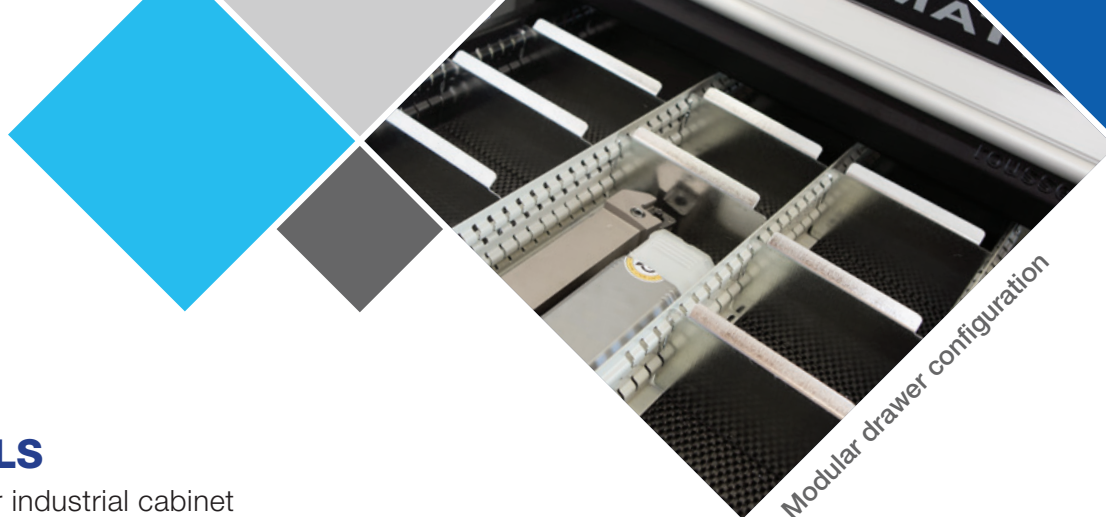
- ◆ Total cabinet weight is subject to number and type of drawers and number of Auto-Locks: MAXI with 4 drawers and 4 Auto-Locks approximate weight is 260 kg (575 lb); MAXI with 12 drawers approximate weight is 460 kg (1015 lb)
- ◆ Cabinet frame includes 4 adjustable legs and removable front panel for forklift
- ◆ Drawer heights (net): 50 mm, 75 mm, 100 mm and 125 mm [Jumbo] (2 inch, 2.9 inch, 3.9 inch and 4.9 inch).
- ◆ Maximum drawers per cabinet: 12 or 9 with Auto-Lock [depending on drawer height]
- ◆ Recommended load weight per drawer: 50 kg (110 lb)

◆ MINI Specifications

- ◆ Total cabinet weight is subject to number and type of drawers and number of Auto-Lock: MINI with 4 drawers approximate weight is 120kg (265 lb)
- ◆ Cabinet is mounted on wood pallet for shifting onto lockable trolley accessory or workbench
- ◆ Drawer heights (net): 50 mm, 75 mm and 100 mm (2 inch, 2.9 inch and 3.9 inch).
- ◆ Maximum drawers per cabinet: 5 or 4 with Auto-Lock [depending on drawer height]
- ◆ Recommended load weight per drawer: 20 kg (44 lb)

◆ MINI





■ Modular drawer configuration

◆ MATRIX DLS

- ◆ Sturdy 8 drawer industrial cabinet
- ◆ Each drawer is electronically locked
- ◆ POD version - supplementary storage to an existing MATRIX cabinet
- ◆ TOUCH version - with all-in-one pc/touchscreen, bar code reader and software license
- ◆ Direct network connection and single power supply 110-230V
- ◆ 180kg load weight per drawer
- ◆ Cabinet dimensions 915mm/36" (W) x 610mm/24" (D) x 1169mm/46" (H)
- ◆ Drawers (H): 3 x 101mm/4"; 4 x 127mm/5"; 1 x 203mm/8"
- ◆ 50mm/2" (H) Front Access Forklift Base



■ Manual override





■ Modular bins and drawers



■ Sample of 16 standard bin types



CTMS – Commodity and Tool Management Services
 Division of IMC Group
matrix@ctms-imc.com
www.ctms-imc.com

