

### TURNING INSERTS

#### Product Lines

ISO Turning Inserts  
ISO Boring Inserts

#### Material

Hardened Steel

#### Grade Designations

**Current:** TB610  
**NEW:** TB2005

**Current:** TB670  
**NEW:** TB2025

## CBN Grade Designation Change Notice

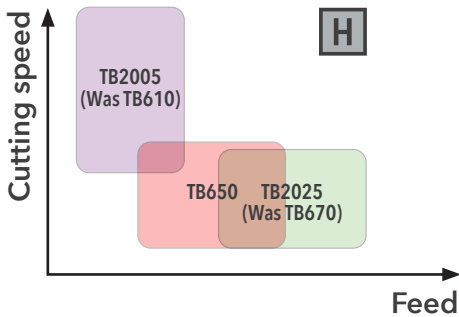
As part of our grade designation restructuring program for ISO turning inserts made from advanced materials, Ingersoll is renaming two legacy CBN grades for machining high hardness steel:

- Existing grade TB610 is being changed to TB2005
- Existing grade TB670 is being changed to TB2025

**No structural, physical, or production changes are being made to the inserts. The only change is to the grade designations. Item numbers will remain the same.**

Once the current stock with old grade designations is depleted, inserts with new grade designations will replace them.

Refer to the following pages for old and new descriptions.



Updated designation system for advanced material grades (Ceramic, CBN, PCD)

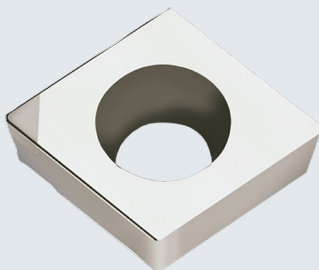
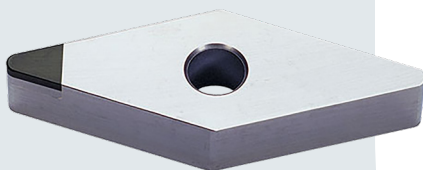
## T B 2 0 2 5

| Material        |
|-----------------|
| TD : PCD        |
| TC : Ceramic    |
| <b>TB : CBN</b> |

| ISO Class    |
|--------------|
| 1 : <b>N</b> |
| 2 : <b>H</b> |
| 3 : <b>S</b> |
| 7 : <b>K</b> |
| 8 : <b>P</b> |
| 9 : <b>M</b> |

| Coating             |
|---------------------|
| <b>0 : Uncoated</b> |
| 1-6 : PVD coated    |
| 7-9 : CVD coated    |

| ISO Range           |
|---------------------|
| 05 <b>Hardness</b>  |
| 10                  |
| •                   |
| •                   |
| 45                  |
| 50 <b>Toughness</b> |





## Old/New Descriptions (continued)

### TB670 TO TB2025

| Item No. | Old Description       | ➡➡➡➡➡ | New Description        |
|----------|-----------------------|-------|------------------------|
| 5403024  | CCGW21.50.5LS2 TB670  | ➡➡➡➡➡ | CCGW21.50.5LS2 TB2025  |
| 5403025  | CCGW21.51LS2 TB670    | ➡➡➡➡➡ | CCGW21.51LS2 TB2025    |
| 5403026  | CCGW21.52LS2 TB670    | ➡➡➡➡➡ | CCGW21.52LS2 TB2025    |
| 5403027  | CCGW32.51LS2 TB670    | ➡➡➡➡➡ | CCGW32.51LS2 TB2025    |
| 5403028  | CCGW32.51WZ-LS2 TB670 | ➡➡➡➡➡ | CCGW32.51WZ-LS2 TB2025 |
| 5403029  | CCGW32.52LS2 TB670    | ➡➡➡➡➡ | CCGW32.52LS2 TB2025    |
| 5403037  | CNGA431LN TB670       | ➡➡➡➡➡ | CNGA431LN TB2025       |
| 5403038  | CNGA431LS2 TB670      | ➡➡➡➡➡ | CNGA431LS2 TB2025      |
| 5403039  | CNGA431LS4 TB670      | ➡➡➡➡➡ | CNGA431LS4 TB2025      |
| 5403031  | CNGA431WZ-LS2 TB670   | ➡➡➡➡➡ | CNGA431WZ-LS2 TB2025   |
| 5403041  | CNGA432LS2 TB670      | ➡➡➡➡➡ | CNGA432LS2 TB2025      |
| 5403042  | CNGA432LS4 TB670      | ➡➡➡➡➡ | CNGA432LS4 TB2025      |
| 5403033  | CNGA432WZ-LS2 TB670   | ➡➡➡➡➡ | CNGA432WZ-LS2 TB2025   |
| 5403034  | CNGA432WZ-LS4 TB670   | ➡➡➡➡➡ | CNGA432WZ-LS4 TB2025   |
| 5403045  | CNGA433LS4 TB670      | ➡➡➡➡➡ | CNGA433LS4 TB2025      |
| 5403035  | CNGA433WZ-LS2 TB670   | ➡➡➡➡➡ | CNGA433WZ-LS2 TB2025   |
| 5403036  | CNGA433WZ-LS4 TB670   | ➡➡➡➡➡ | CNGA433WZ-LS4 TB2025   |
| 5403046  | DCGW21.50.5LS2 TB670  | ➡➡➡➡➡ | DCGW21.50.5LS2 TB2025  |
| 5403048  | DCGW21.51LS2 TB670    | ➡➡➡➡➡ | DCGW21.51LS2 TB2025    |
| 5403049  | DCGW32.51LS2 TB670    | ➡➡➡➡➡ | DCGW32.51LS2 TB2025    |
| 5403050  | DCGW32.52LS2 TB670    | ➡➡➡➡➡ | DCGW32.52LS2 TB2025    |
| 5403052  | DNGA431LS2 TB670      | ➡➡➡➡➡ | DNGA431LS2 TB2025      |
| 5403054  | DNGA432LN TB670       | ➡➡➡➡➡ | DNGA432LN TB2025       |
| 5403057  | DNGA432LS2 TB670      | ➡➡➡➡➡ | DNGA432LS2 TB2025      |
| 5403058  | DNGA432LS4 TB670      | ➡➡➡➡➡ | DNGA432LS4 TB2025      |
| 5403060  | DNGA433LS2 TB670      | ➡➡➡➡➡ | DNGA433LS2 TB2025      |
| 5403061  | DNGA433LS4 TB670      | ➡➡➡➡➡ | DNGA433LS4 TB2025      |
| 5403063  | DNGA441LS2 TB670      | ➡➡➡➡➡ | DNGA441LS2 TB2025      |
| 5403064  | DNGA442LN TB670       | ➡➡➡➡➡ | DNGA442LN TB2025       |
| 5403065  | DNGA442LS2 TB670      | ➡➡➡➡➡ | DNGA442LS2 TB2025      |
| 5403066  | DNGA442LS4 TB670      | ➡➡➡➡➡ | DNGA442LS4 TB2025      |
| 5403067  | DNGA443LS2 TB670      | ➡➡➡➡➡ | DNGA443LS2 TB2025      |
| 5403068  | RNG32FT TB670         | ➡➡➡➡➡ | RNG32FT TB2025         |

