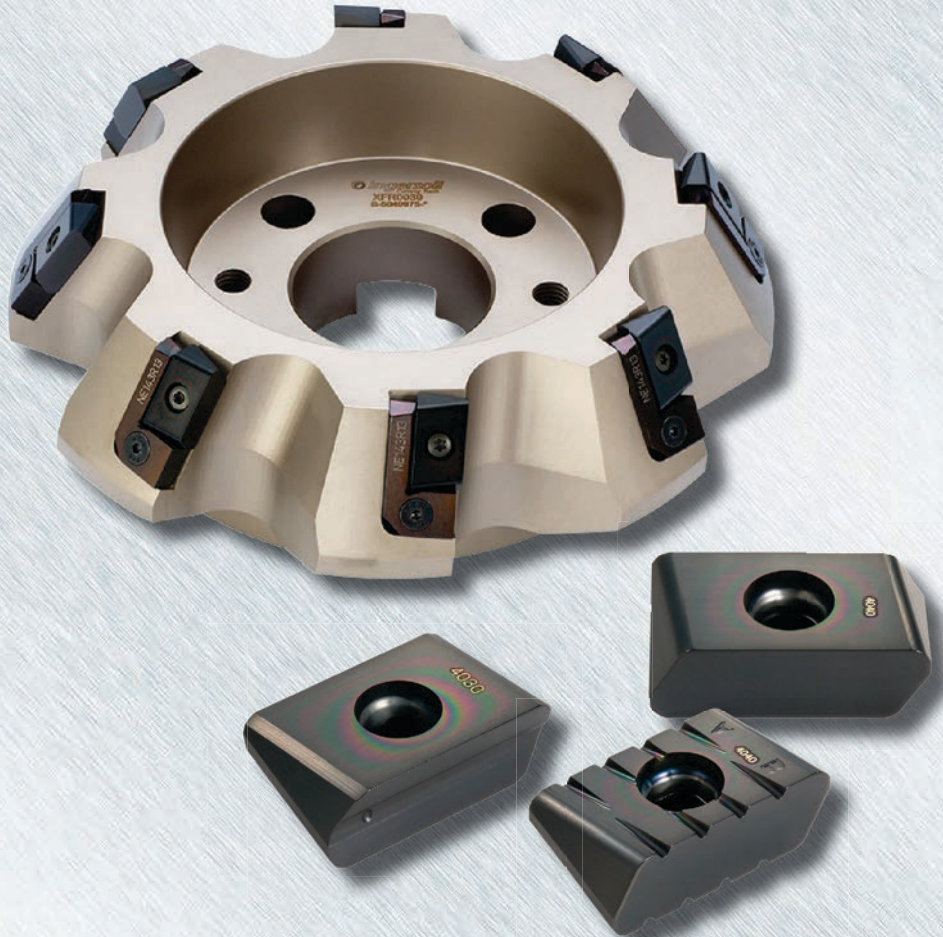


SUPEROMAX™

POWER-SHEAR™



Diameters:
4.00" - 12.00"

Depth of Cut:
.76"

Insert Style:
LPE546R001-S
LSE546R001-S
ZSE546R001-S

Insert Grades:
IN2530, IN2540, IN4030, IN4040

Materials:
Steels:
Low-High Carbon, Low-High Alloy,
HSLA, Tool Steel, Impact Resistant,
Abrasion Resistant

Stainless Steels:
PH Series, Martensitic

Irons:
Ductile, Nodular

**NEW
PRODUCT
ANNOUNCEMENT
UPDATE
2016**

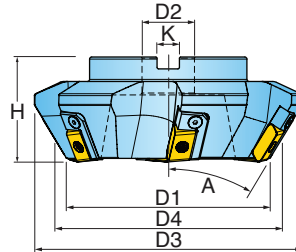
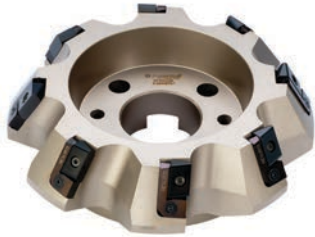
Features & Benefits:

- Power-Shear™ technology for massive chip loads thru scale and interruptions.
- High incline screw technology for greater insert stability.
- Ideally suited to cast, forged & rolled steels, irons and stainless steels.
- One style L-nest seats all three insert geometries

SUPERMAX™

SERIES 9M2L

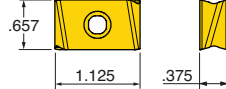
Heavy Duty 60° Face Mill with 4 indexes



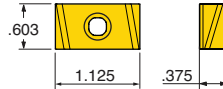
Cutter Number	D1 Effective Diameter	D3 Maximum Diameter	D4 Body O.D.	A Angle	H Height	D2 Bore Diameter	K Keyway	Bolt Circle	Number of Inserts
9M2L-04R01	4.000	4.90	5.66	30.0	3.000	1.500	0.625	NA	5
9M2L-06R01	6.000	6.90	7.66	30.0	3.000	1.500	0.625	NA	6
9M2L-08R01	8.000	8.90	9.66	30.0	3.000	2.500	1.000	4.00	8
9M2L-10R01	10.000	10.90	11.66	30.0	3.000	2.500	1.000	4.00	10
9M2L-12R01	12.000	12.90	13.66	30.0	3.000	2.500	1.000	4.00, 4.75, 7.00	12

SUPERMAX™ SERIES 9M2L INSERTS

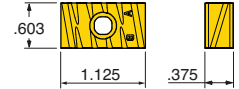
LPE546R001-S



LSE546R001-S



ZSE546R001-S



Inserts

Part Number	Corner	Application	Grade			
			IN2530	IN2540	IN4030	IN4040
LPE546R001-S	0.059 Wiper	Multi-Purpose	•		•	
LSE546R001-S	0.090 R w/.022" Wiper	Heavy-Duty		•		•
ZSE546R001-S	0.090 R w/.022" Wiper	Heavy-Duty, Serrated				•

Hardware



Insert Screw
SM50-160-R0



Driver Handle
DS-A00T



Driver Blade
DS-T206B



L-Nest
NE143R13



L-Nest Screw
SE-03-65



OPERATING GUIDELINES

Insert	Material	Brinnell Hardness	SFM	Feed Per Insert	Grades				
					IN2530	IN2540	IN4030	IN4040	
LPE	Iron	Gray	700-1200	500-900	.006-.018	2		1	
		Nodular	500-900			2		1	
	Steel	Low Carbon	150-350	400-800	.006-.018	1		1	
		Stainless 17-4, 303, 420	250-450	250-450	.006-.014	1		2	
LSE/ZSE	Steel	Low Carbon 1018, A36 104	150-350	350-750	.008-.024		2		1
		Alloyed Steel 4140, 4340, 300M	250-450	175-450	.008-.018		2		1
		Tool P20, FX, D2, H13					2		1
		Armor, Rail, Hardox	300-500	125-500	.010-.014		2		1