



GOLDOMAX⁴

MILLING PRODUCTS

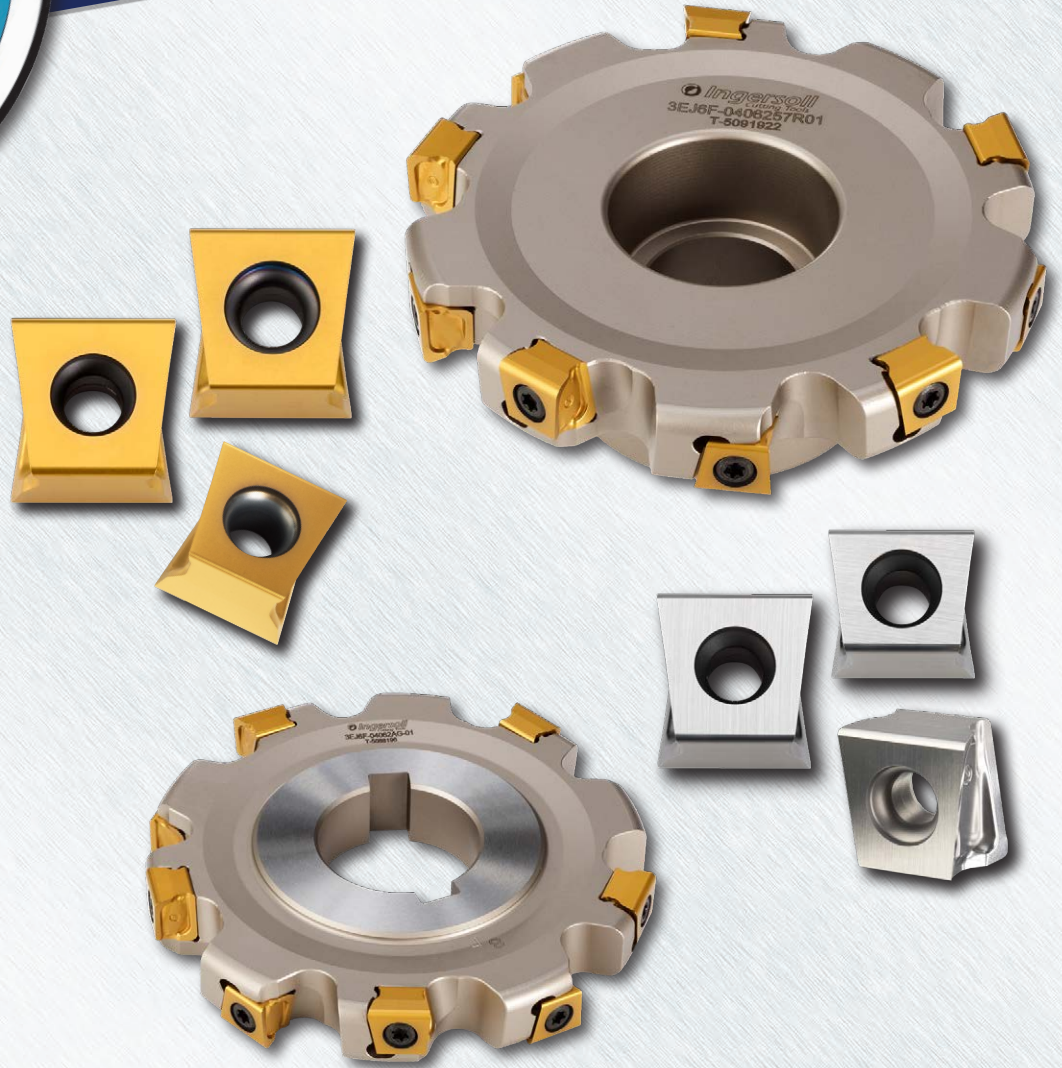
Diameters:
4.00" - 10.00"

Cutting Widths:
.625", .750", 1.000"

Mounting:
Axial and Radial Drive

Corner Radii:
.031", .062", .093", .125"

Grades:
IN05S
IN4015
IN4005
IN4030
IN2530



Tangential Technology Perfectly Applied

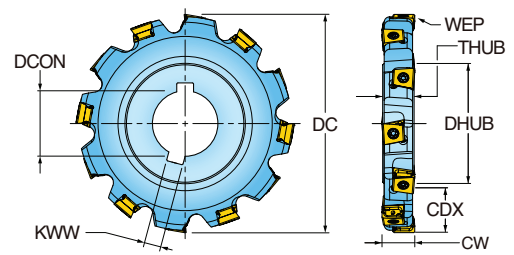
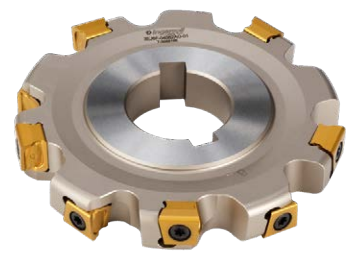
Features & Benefits

- Slotters available in 3 different size widths, .625" , .750" , 1.00"
- Diameters ranging from Ø4.00" - Ø10.00"
- Axial and Radial drive slotter bodies available
- Neutral hand inserts provide 2 RH and 2 LH cutting edges fitting all pockets
- Latest carbide grades available including IN05S for non-ferrous materials
- Precise width adjustment with tailor made specials



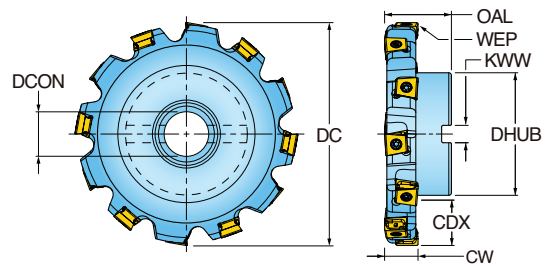
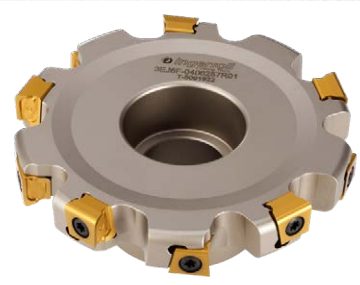
GOLDOMAX⁴™ SERIES 3EJ6

HEAVY DUTY AXIAL DRIVE SLOTTED - .625 CUTTING WIDTH



Part Number	DC Cutting Dia.	CW Cutting Width	CDX Cutting Depth Max.	ZFP Effective Teeth	ZNP Insert Count	DHUB Hub Dia.	THUB Hub Thickness	DCON Bore Dia.	KWW Keyway	Insert Series
3EJ6F-04062AG-01	4.000	0.625	0.870	5	10	2.250	0.595	1.250	0.31	DGM315
3EJ6F-05062AH-01	5.000	0.625	1.120	6	12	2.750	0.595	1.500	0.38	DGM315
3EJ6F-06062AH-01	6.000	0.625	1.250	7	14	3.500	0.595	1.500	0.38	DGM315
3EJ6F-08062AK-01	8.000	0.625	2.250	8	16	3.500	0.595	2.000	0.50	DGM315
3EJ6F-10062AK-01	10.000	0.625	3.250	9	18	3.500	0.595	2.000	0.50	DGM315

HEAVY DUTY RADIAL DRIVE SLOTTED - .625 CUTTING WIDTH

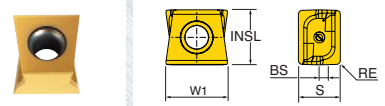


Part Number	DC Cutting Dia.	CW Cutting Width	CDX Cutting Depth Max.	OAL Overall Length	ZFP Effective Teeth	ZNP Insert Count	DHUB Hub Dia.	DCON Bore Dia.	KWW Keyway	Insert Series
3EJ6F-0406257R01	4.000	0.625	0.97	1.50	5	10	2.00	1.000	0.38	DGM315
3EJ6F-0506257R01	5.000	0.625	1.10	1.50	6	12	2.75	1.000	0.38	DGM315
3EJ6F-0606258R01	6.000	0.625	1.60	2.00	7	14	2.75	1.500	0.63	DGM315
3EJ6F-0806258R01	8.000	0.625	2.06	2.00	8	16	3.81	1.500	0.63	DGM315
3EJ6F-1006261R01	10.000	0.625	2.53	2.00	9	18	4.87	2.500	1.00	DGM315

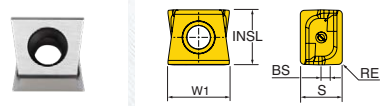


GOLD^oMAX⁴™ DGM315 INSERTS

DGM315









DGM315...-P



Part Number	Application	RE Corner Radius	BS Wiper Length	INSL Insert Length	W1 Insert Width	S Thickness	NOI Number of Indexes	IH Insert Hand	Grade	IN055	IN4015	IN4005	IN4030	IN2530
DGM315-001	Multi-Purpose	.031 R	0.109	0.413	0.461	0.315	4	Neutral			•	•	•	•
DGM315-001-P	Sharp & Polished	.031 R	0.109	0.413	0.461	0.315	4	Neutral		•				
DGM315-002	Multi-Purpose	.062 R	0.076	0.413	0.454	0.315	4	Neutral			•	•	•	•
DGM315-002-P	Sharp & Polished	.062 R	0.076	0.413	0.454	0.315	4	Neutral		•				
DGM315-003	Multi-Purpose	.093 R	0.044	0.413	0.448	0.315	4	Neutral			•		•	•
DGM315-003-P	Sharp & Polished	.093 R	0.044	0.413	0.448	0.315	4	Neutral		•				
DGM315-004	Multi-Purpose	.125 R	0.012	0.413	0.441	0.315	4	Neutral				•	•	•
DGM315-004-P	Sharp & Polished	.125 R	0.012	0.413	0.441	0.315	4	Neutral		•				

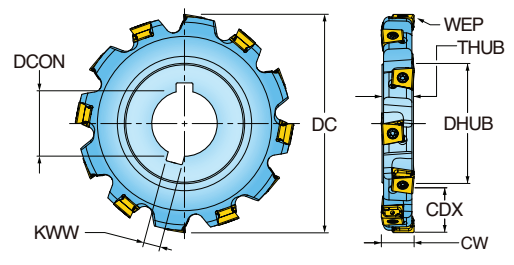
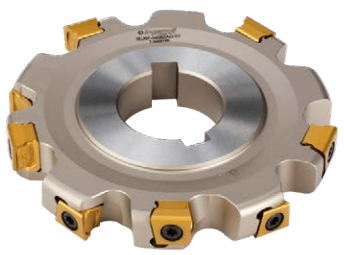
GOLD^oMAX⁴™ HARDWARE

						
	Insert Screw	Driver Handle	Driver Bit	**OPTIONAL** Torque Driver Handle	**OPTIONAL** Preset Torque Bit	**OPTIONAL** Torque Driver Bit
DGM315 Series	SM40-143-H0	DS-A00T	DS-T156B	DS-A00-.25-T	DT-35-.25	DS-T15B



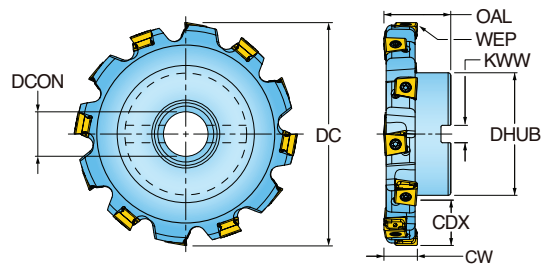
GOLD^oMAX⁴™ SERIES 3EJ6

HEAVY DUTY AXIAL DRIVE SLOTTER - .750 CUTTING WIDTH



Part Number	DC Cutting Dia.	CW Cutting Width	CDX Cutting Depth Max.	ZEP Effective Teeth	ZNP Insert Count	DHUB Hub Dia.	THUB Hub Thickness	DCON Bore Dia.	KWW Keyway	Insert Series
3EJ6J-04075AG-01	4.000	0.750	0.870	5	10	2.250	0.720	1.250	0.31	DGM325
3EJ6J-05075AH-01	5.000	0.750	1.120	6	12	2.750	0.720	1.500	0.38	DGM325
3EJ6J-06075AH-01	6.000	0.750	1.250	7	14	3.500	0.720	1.500	0.38	DGM325
3EJ6J-08075AK-01	8.000	0.750	2.250	8	16	3.500	0.720	2.000	0.50	DGM325
3EJ6J-10075AK-01	10.000	0.750	3.250	9	18	3.500	0.720	2.000	0.50	DGM325

HEAVY DUTY RADIAL DRIVE SLOTTER - .750 CUTTING WIDTH

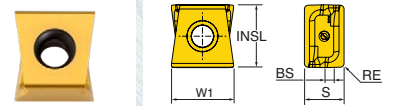


Part Number	DC Cutting Dia.	CW Cutting Width	CDX Cutting Depth Max.	OAL Overall Length	ZEP Effective Teeth	ZNP Insert Count	DHUB Hub Dia.	DCON Bore Dia.	KWW Keyway	Insert Series
3EJ6J-0407557R01	4.000	0.750	0.97	1.50	5	10	2.00	1.000	0.38	DGM325
3EJ6J-0507557R01	5.000	0.750	1.10	1.50	6	12	2.75	1.000	0.38	DGM325
3EJ6J-0607558R01	6.000	0.750	1.60	2.00	7	14	2.75	1.500	0.63	DGM325
3EJ6J-0807558R01	8.000	0.750	2.06	2.00	8	16	3.81	1.500	0.63	DGM325
3EJ6J-1007561R01	10.000	0.750	2.53	2.00	9	18	4.87	2.500	1.00	DGM325

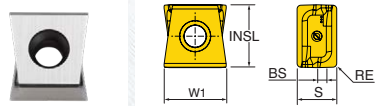


GOLD^oMAX⁴™ DGM325 INSERTS

DGM325









DGM325...-P



Part Number	Application	RE Corner Radius	BS Wiper Length	INSL Insert Length	W1 Insert Width	S Thickness	NOI Number of Indexes	IH Insert Hand	Grade	IN055	IN4015	IN4005	IN4030	IN2530
DGM325-001	Multi-Purpose	.031 R	0.109	0.500	0.494	0.315	4	Neutral			•	•	•	•
DGM325-001-P	Sharp & Polished	.031 R	0.109	0.500	0.494	0.315	4	Neutral		•				
DGM325-002	Multi-Purpose	.062 R	0.076	0.500	0.488	0.315	4	Neutral			•	•	•	•
DGM325-002-P	Sharp & Polished	.062 R	0.076	0.500	0.488	0.315	4	Neutral		•				
DGM325-003	Multi-Purpose	.093 R	0.044	0.500	0.481	0.315	4	Neutral			•	•	•	•
DGM325-003-P	Sharp & Polished	.093 R	0.044	0.500	0.481	0.315	4	Neutral		•				
DGM325-004	Multi-Purpose	.125 R	0.012	0.500	0.475	0.315	4	Neutral			•	•	•	•
DGM325-004-P	Sharp & Polished	.125 R	0.012	0.500	0.475	0.315	4	Neutral		•				

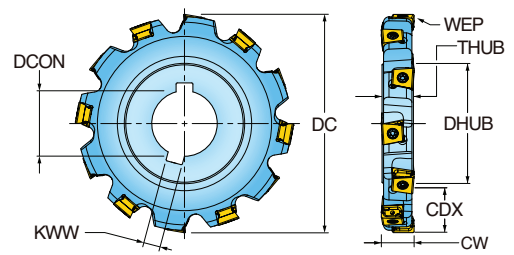
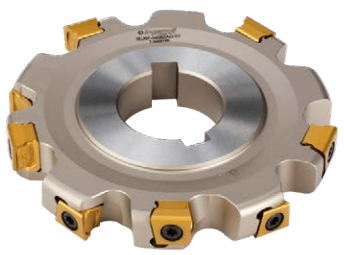
GOLD^oMAX⁴™ HARDWARE

						
	Insert Screw	Driver Handle	Driver Bit	**OPTIONAL** Torque Driver Handle	**OPTIONAL** Preset Torque Bit	**OPTIONAL** Torque Driver Bit
DGM325 Series	SM40-143-H0	DS-A00T	DS-T156B	DS-A00-.25-T	DT-35-.25	DS-T15B



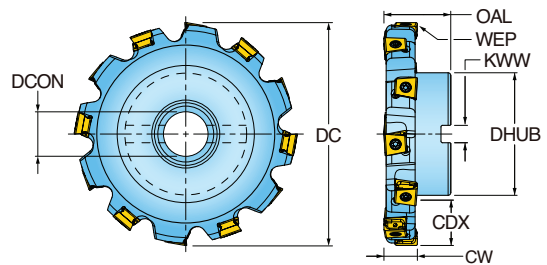
GOLD•MAX⁴™ SERIES 3EJ6

HEAVY DUTY AXIAL DRIVE SLOTTER - 1.000 CUTTING WIDTH



Part Number	DC Cutting Dia.	CW Cutting Width	CDX Cutting Depth Max.	ZFP Effective Teeth	ZNP Insert Count	DHUB Hub Dia.	THUB Hub Thickness	DCON Bore Dia.	KWW Keyway	Insert Series
3EJ6M-04100AG-01	4.000	1.000	0.870	4	8	2.250	0.970	1.500	0.38	DGM426
3EJ6M-05100AH-01	5.000	1.000	1.120	5	10	2.750	0.970	1.500	0.38	DGM426
3EJ6M-06100AH-01	6.000	1.000	1.250	6	12	3.500	0.970	1.500	0.38	DGM426
3EJ6M-08100AK-01	8.000	1.000	2.250	7	14	3.500	0.970	2.000	0.50	DGM426
3EJ6M-10100AK-01	10.000	1.000	3.250	8	16	3.500	0.970	2.000	0.50	DGM426

HEAVY DUTY RADIAL DRIVE SLOTTER - 1.000 CUTTING WIDTH

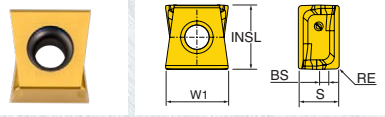


Part Number	DC Cutting Dia.	CW Cutting Width	CDX Cutting Depth Max.	OAL Overall Length	ZFP Effective Teeth	ZNP Insert Count	DHUB Hub Dia.	DCON Bore Dia.	KWW Keyway	Insert Series
3EJ6M-0410057R01	4.000	1.000	0.97	1.50	4	8	2.00	1.000	0.38	DGM426
3EJ6M-0510057R01	5.000	1.000	1.10	1.50	5	10	2.75	1.000	0.38	DGM426
3EJ6M-0610058R01	6.000	1.000	1.60	2.00	6	12	2.75	1.500	0.63	DGM426
3EJ6M-0810058R01	8.000	1.000	2.06	2.00	7	14	3.81	1.500	0.63	DGM426
3EJ6M-1010061R01	10.000	1.000	2.53	2.00	8	16	4.87	2.500	1.00	DGM426

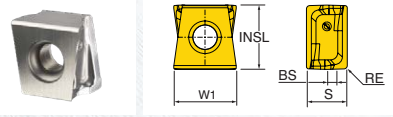


GOLD^oMAX⁴™ DGM426 INSERTS

DGM426









DGM426...-P



Part Number	Application	RE Corner Radius	BS Wiper Length	INSL Insert Length	W1 Insert Width	S Thickness	NOI Number of Indexes	IH Insert Hand	Grade	IN055	IN4015	IN4005	IN4030	IN2530
DGM426-001	Multi-Purpose	.031 R	0.108	0.591	0.574	0.375	4	Neutral			•	•	•	•
DGM426-001-P	Sharp & Polished	.031 R	0.108	0.591	0.574	0.375	4	Neutral		•				
DGM426-002	Multi-Purpose	.062 R	0.076	0.591	0.568	0.375	4	Neutral			•	•	•	•
DGM426-002-P	Sharp & Polished	.062 R	0.076	0.591	0.568	0.375	4	Neutral		•				
DGM426-003	Multi-Purpose	.093 R	0.043	0.591	0.561	0.375	4	Neutral			•	•	•	•
DGM426-003-P	Sharp & Polished	.093 R	0.043	0.591	0.561	0.375	4	Neutral		•				
DGM426-004	Multi-Purpose	.125 R	0.011	0.591	0.555	0.375	4	Neutral			•	•	•	•
DGM426-004-P	Sharp & Polished	.125 R	0.011	0.591	0.555	0.375	4	Neutral		•				

GOLD^oMAX⁴™ HARDWARE

							
	Insert Screw	Driver Handle	Driver Bit	**OPTIONAL** Torque Driver Handle	**OPTIONAL** Preset Torque Bit	**OPTIONAL** Torque Driver Bit	
DGM426 Series	SM50-160-10	DS-A00T	DS-T206B	DS-A00-.25-T	DT-44-.25	DS-T20B	



GOLD^oMAX⁴™ OPERATING GUIDELINES

Materials				Vc Cutting Speed SFM	fz* Feed/Tooth (inch)	Harder <-----> Tougher					Coolant
ISO	Mat'l Group #VDI 3323	Type	Examples			IN4015	IN4005	IN055	IN4030	IN2530	
P	1 - 5	Non-alloy Steel	1018, A36, 1045, A572, 1070	450-700	.005-.014	1			2	No	
	6 - 9	Low-alloy Steel	4140, 4340, P20, 8620, 300M	300-600	.004-.012	1			2		
	10 - 11	High-alloy Steel	H13, A2, D2, M2, T1	250-400	.004-.012			2	1		
M	12 - 13	Stainless Steel (Ferritic & Martensitic)	410, 416, 440	350-600	.004-.012			2	1	Yes May not be required at high speeds	
	14	Stainless Steel (Austenitic)	303, 304, 316, 15-5, 17-4	300-500	.004-.012			2	1		
K	15 - 16	Gray Cast Iron	CLS. 20, 30, 45	600-850	.005-.015	1	2			No	
	17 - 20	Nodular Cast Iron	60-40-18, 100-70-03	400-450	.005-.015	1	2				
N	21 - 30	Aluminum	7075, 6061	750+	.006-.016			1		Yes	
S	31 - 35	High-Temp Alloys	Inconel, Hastelloy, Nimonic, Monel	60-125	.004-.008			2	1	Yes	
	36 - 37	Titanium Alloys	6Al-4V, 5Al-5Mo-5V-3Cr	75-150	.004-.008			2	1		
H	38 - 39	Hardened Steel >48	A2, O1, D2	150-400	.002-.004	2			1	No	

Note: Feed and speed recommendations are starting operating parameters. They are only guidelines from which further optimization should take place. Operating parameters are influenced by many machining variables. These variables may cause for reductions in feeds and speed or dramatic increases. Additionally, DOC and WOC may need to be revised to optimize the tools performance.

GOLD^oMAX⁴™ PRE-ENGINEERED TAILOR MADE SPECIALS

Max WOC Change	DGM315	DGM325	DGM426
Δ WOC	.125"	.200"	.200"

