

2022

# TOOLING PROMO

Featuring **SPEEDUP**  
HIGH SPEED & FEED



Member IMC Group  
**Ingersoll**  
Cutting Tools



**COST CUTTING**  
★ ★ ★  
**COST CUTTING**  
★ ★ ★  
**COST CUTTING**

# NUMAX HF™

**Hi-feed face mill family with steep ramp angles & reliable dovetailed insert seating**

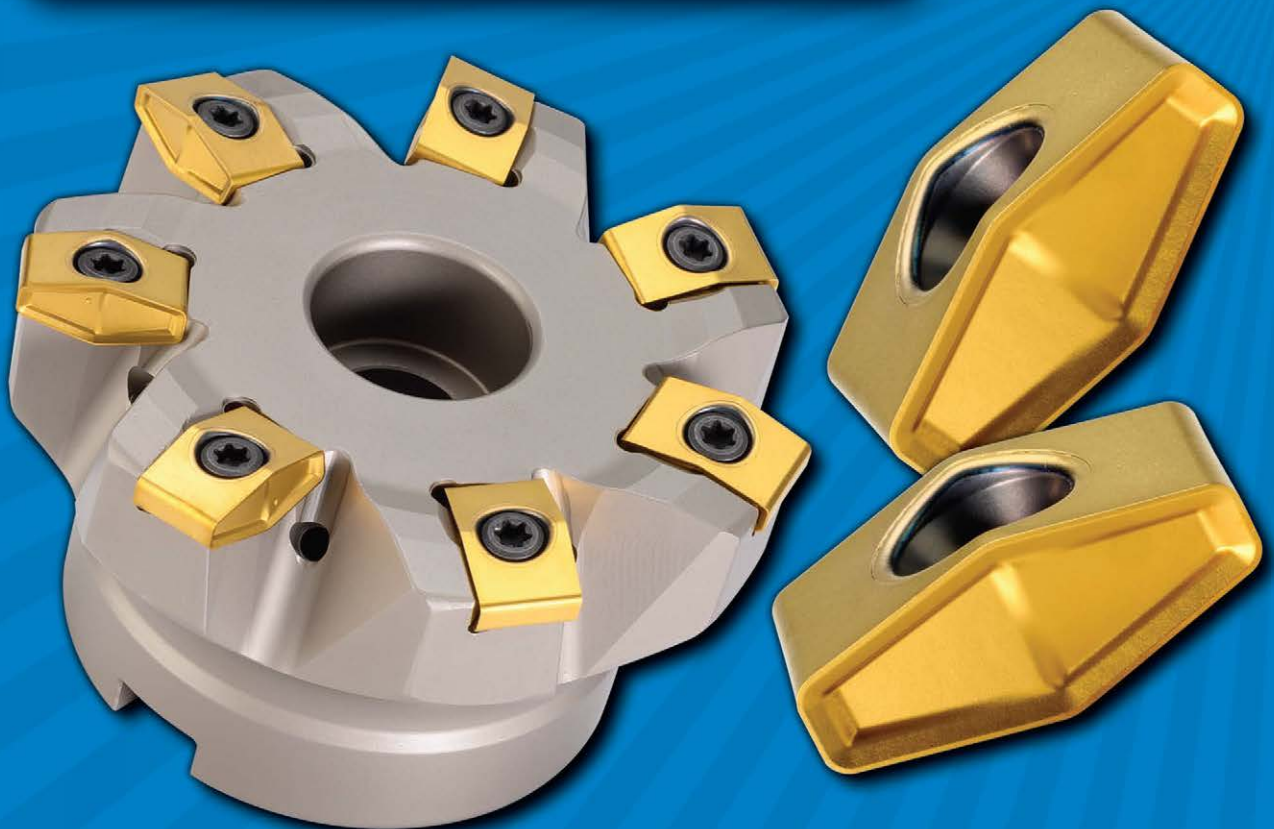
- Unique diamond shaped inserts provide the highest ramping feed rates at the steepest ramping angles
- Thick tangential inserts give maximum reinforcement to the cutting edge and cutter longevity
- Large insert seating areas are dovetailed to stabilize and support the insert under the most aggressive conditions
- Inserts offered in both pressed and ground profiles for economical performance across all material types

**DEAL A** (PC225)

**PURCHASE** 10 inserts / per pocket  
& **RECEIVE** one corresponding face mill body...

**FREE OF CHARGE!**

\*max 5" dia



**SPEED UP**  
HIGH SPEED & FEED





**SPEED UP**  
HIGH SPEED & FEED

# MAXSFEED™

**3 comprehensive series of tangential ramping end mills and face mills feature versatility, productivity, & economy!**


- Insert sizes of 5, 11 and 13mm
- Starting in diameters as small as .500"!
- Dovetailed insert mounting for increased edge life & improved cutter reliability
- High performance, ground-profile inserts are shaped to minimize lap lines when shouldering, available in both heavy and light geometries
- MaxSFeed is capable of ramping and spiral interpolation!



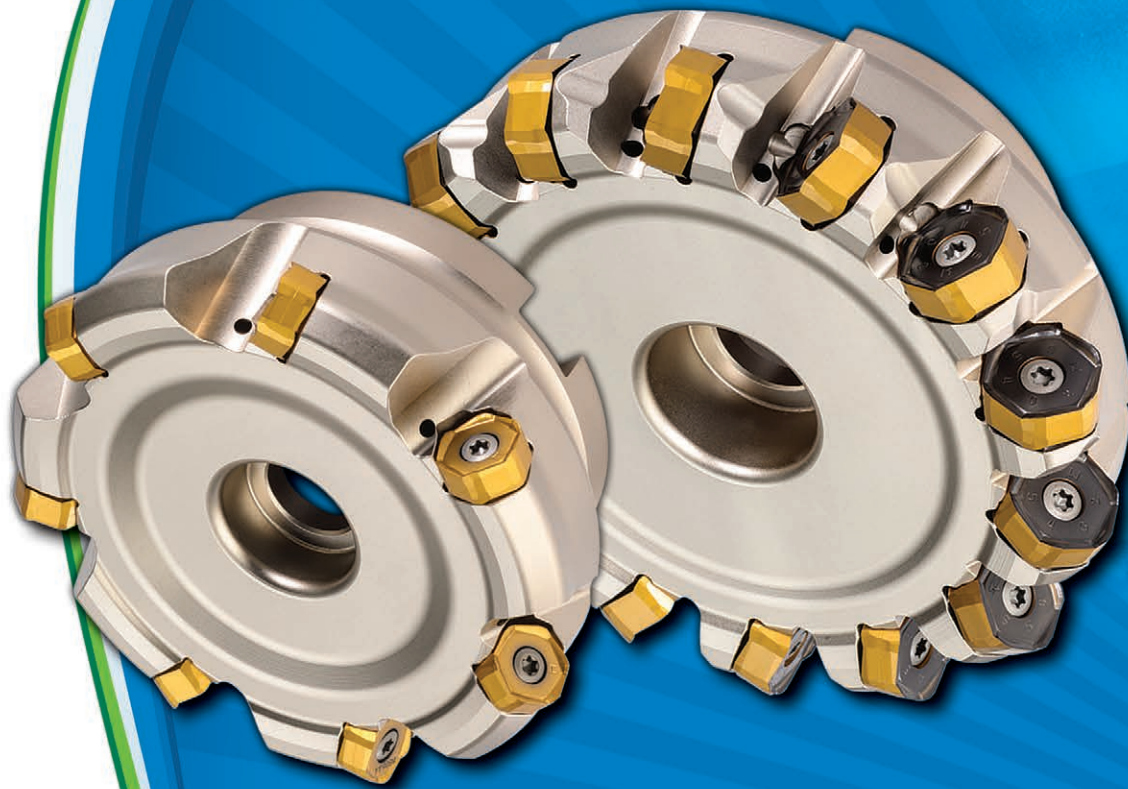
**DEAL A** (PC 224)

**PURCHASE** 10 inserts / per pocket  
**& RECEIVE** one corresponding tool body\*.

**FREE OF CHARGE!** \*max 5" dia



**SPEED UP**  
HIGH SPEED & FEED



## DIPOSHEXA™

**Robust 45° face mill with 12-edge economy!**

- 1.50" - 10.00" cutter diameter range
- .11" maximum depth of cut with 6mm IC insert
- .20" maximum depth of cut with 10mm IC insert
- Reinforced cutting edge boasts hi-feed potential
- High radial pocket incline promotes utmost chip evacuation and fine pitch cutter design for maximized productivity
- Helical cutting edges promote smooth machining
- Unequally spaced insert placement aids to diffuse vibration
- Integrated wiper flats produce 32-63 Ra surface finishes
- Ideal for steels and iron!



**DEAL A** (PC227)

**PURCHASE** 10 inserts / per pocket  
& **RECEIVE** one corresponding face mill body\*\*

**FREE OF CHARGE!**

\*max 5" dia



# DIPOSDUO™



**90°, backdraft, hi-feed & hi-ramp versatility with 4-edge economy!**

- .50" - 4.00" cutter diameter range
- Offered with 5 insert sizes accommodating a wide range of diameter, density & cut options
- True 90° shoulder milling capability
- Same cutter body utilizes 90°, backdraft & hi-feed inserts
- Concave face design accommodates ramping, interpolation and drill-mill functions
- Pockets designed with wide mounting area for utmost support behind the cutting edge
- Cutters plumbed with coolant through the tool
- Integrated wiper flats produce 32-63 Ra surface finishes



**SPEEDUR**  
HIGH SPEED & FEED

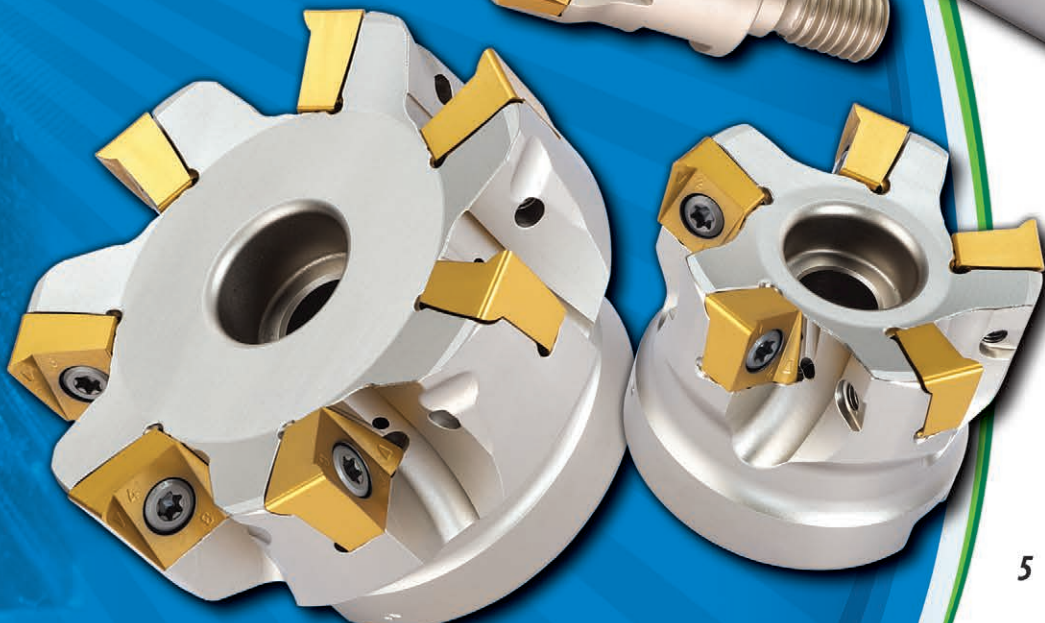


## **DEAL A** (PC228)



**PURCHASE** 10 inserts / per pocket  
& **RECEIVE** one corresponding tool body\*..

**FREE OF CHARGE!** \*max 5" dia



**NEW  
SIZES!**

# GOLDFEED™ 4,16

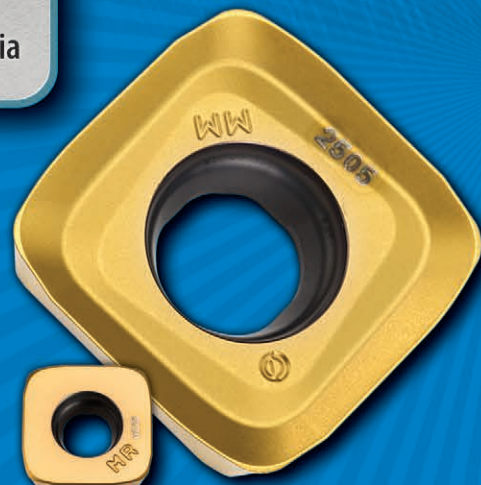
**NEW GoldSFeed expansion featuring  
4 & 16mm insert sizes**

- 2 additional IC sizes of 4mm and 16mm with DOCs of .023" and .107" respectively
- Expanding the GoldSFeed line to include cutter diameters as small as .375"
- GoldSFeed is now one of the most complete and extensive hi-feed milling line in metalworking

**DEAL A** (PC229)

**PURCHASE** 10 inserts / per pocket  
& **RECEIVE** one corresponding tool body\*..

**FREE OF CHARGE!** \*max 5" dia

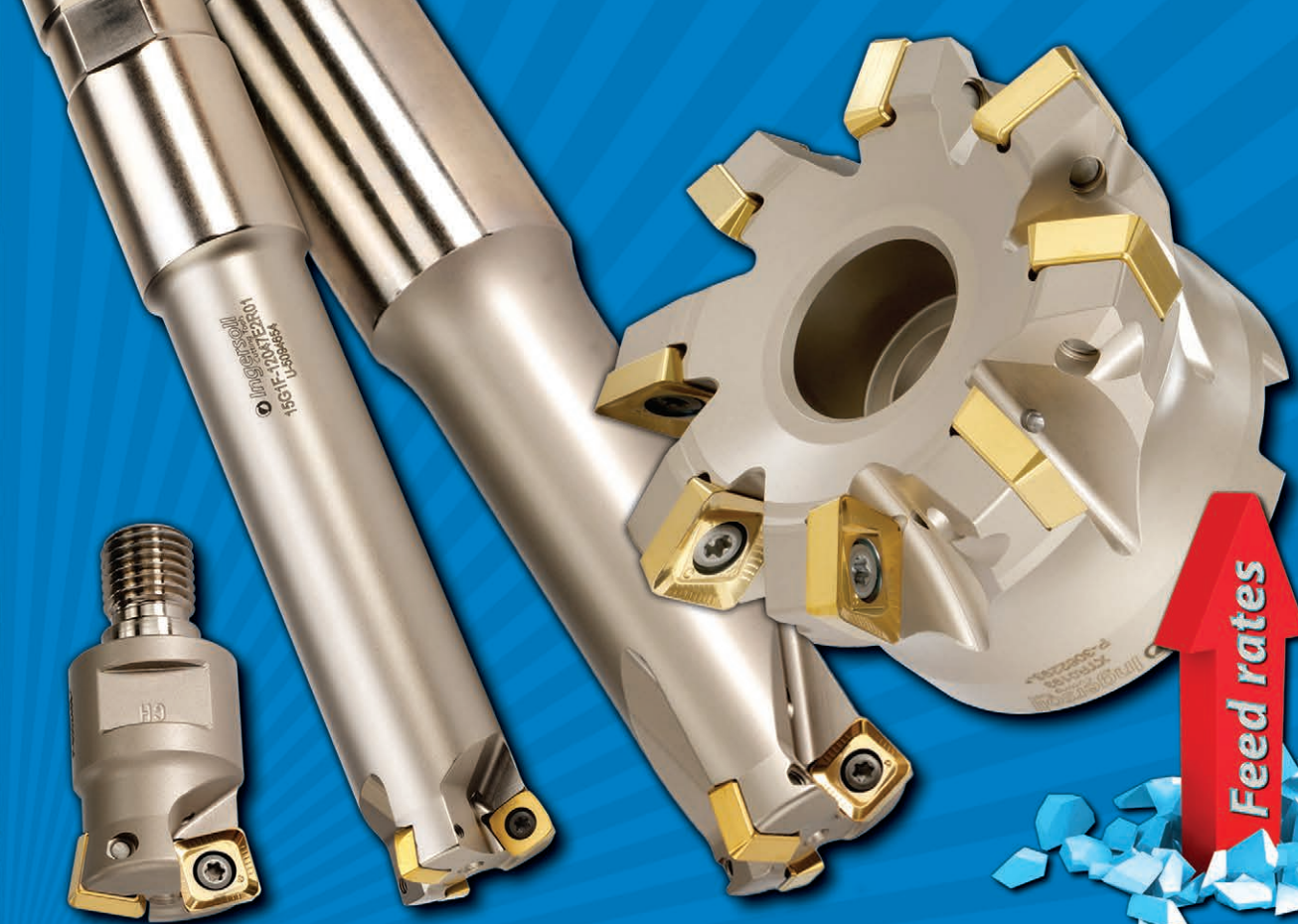


**SFEED UP**  
HIGH SPEED & FEED





**SPEED UP**  
HIGH SPEED & FEED



# **GOLD SFEED™ 9, 13 & 19**

**The original GoldSFeed hi-feed milling line that started it all. 9, 13 & 19mm insert sizes**


- 3 distinct insert geometries provide an optimal solution across all material classes and application types
- Ingeniously designed insert mounting for reliable fast feed rates
- All inserts include radial wipers for smooth profiling, shouldering and hole interpolation which can eliminate secondary operations



**DEAL A** (PC 230A)  
**PURCHASE** 20 inserts & **RECEIVE** one corresponding end mill\* at **50% OFF!**

**DEAL B** (PC230B)  
**PURCHASE** 40 inserts & **RECEIVE** one corresponding face mill\* at **50% OFF!**

\*max 5" dia



**SPEED UP**  
HIGH SPEED & FEED



MEDIUM

## HIPOSSPEED<sup>™</sup>

**Mini sized 90° shoulder and hi-feed mills with strong V-shaped insert**

- .250 – .500" diameter cutter range
- V-bottom pocket fosters easy insert indexing, increased core diameter and minimizes insert screw stress
- 90° and hi-feed inserts fit the same pockets
- Integrated wiper flats produce 32-63 Ra surface finishes
- All cutters are plumbed with coolant through the tool
- High cutter densities with small IC insert sizes
- Economical solid carbide alternative!

**DEAL A** (PC223)

**PURCHASE** 10 inserts / per pocket  
& **RECEIVE** one corresponding tool body...

**FREE OF CHARGE!**





# TEDI FEED

**High number of PCD cutting edges for high productivity!**

- High rigidity double clamping system to support hi-feed machining
- Up to .016" total axial adjustment to ensure an excellent surface finish
- Multiple cutting edge geometries to cover any application, including 90° and 75° lead angles
- 1.5" (40mm) available in cylindrical shank
- 2.0-5.0" (50mm-125mm) range in shell mill or monoblock bodies
- DOC capability of .157" (4mm)
- Ability to re-tip cartridges



**SPEED UP**  
HIGH SPEED & FEED

**DEAL A** (PC 231)

**PURCHASE** 2 fills of inserts

**& RECEIVE** one corresponding tool body

at **75% OFF!** plus shell mill adapter...

**FREE OF CHARGE!**



**NEW!**

# GOLD TWIST

**Premium hole machining with expanded range of TPC self-centering tips**

- Unique geometry eliminates need for a pilot hole
- Excellent surface finish, hole cylindricity and straightness
- Fully compatible with existing GoldTwist drill bodies
- Diameter range: .236" - 1.020" (D6.0-25.9mm)
- For steel and cast iron applications



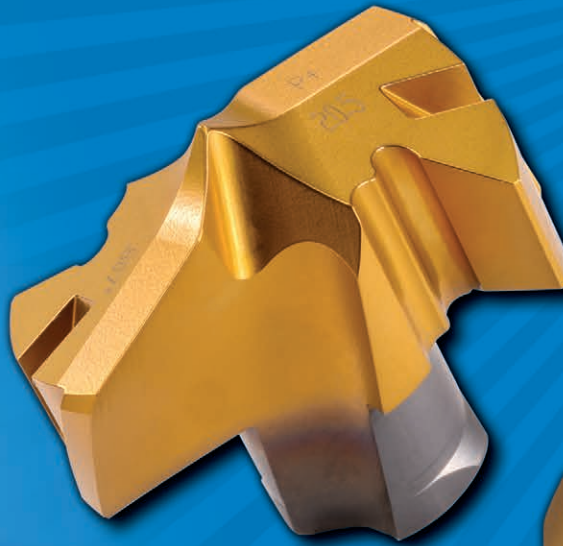
**DEAL A** (PC232)

**PURCHASE** 6 TPC tips & **RECEIVE** one corresponding drill body up to 8xD at a...

**50% DISCOUNT!**



**SPEED UP**  
HIGH SPEED & FEED





Member IMC Group  
**Ingersoll**  
Cutting Tools



# SPADEO TWIST™

**High productivity quick change, tipped drills for large diameter hole making**

- Diameter range: .787"-1.625" (D20.0-D41.3mm)
- LPA geometry for general steel and cast iron applications
- LPF geometry for flat bottom applications in steel and cast iron
- Unique, extremely rigid, quick change clamping system
- 2-effective cutting edges for higher productivity
- Asymmetrical pocket design for error-proof mounting, close tolerance and excellent surface finish
- Available in 3, 5 & 8xD length/diameter ratios
- Thru tool coolant

**DEAL A** (PC233)

**PURCHASE** 6 tips & **RECEIVE** one corresponding drill body up to 8xD at a...

**50% DISCOUNT!**



# TWISTSPEED™

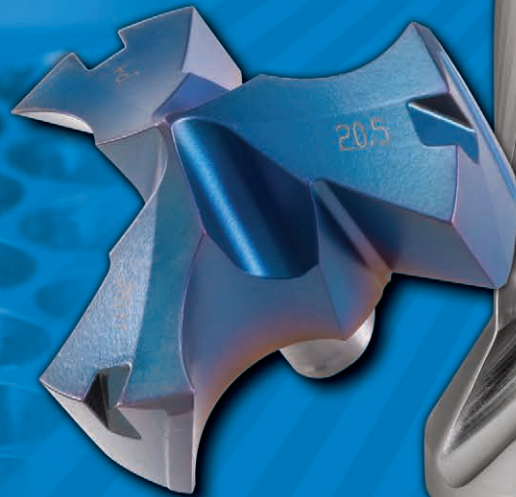
**3-flute quick change drills for increased productivity!**

- 3-flute geometry increases productivity by 50%
- Diameter range: .5906"-.8228" (D15.0-D20.9mm)
- 3xD and 5xD bodies available with cylindrical and universal shanks
- Self-centering geometry
  - Eliminates the need for piloting pre hole
  - Excellent hole precision and finish
  - Reduced spindle loads
- Multiple diameters accommodated with a single body
- Coolant through for excellent chip evacuation
- New IN2205 grade for excellent tool life in steel and cast iron applications
- Simplified tip replacement reduces downtime

**DEAL A** (PC 234)

**PURCHASE** 4 tips & **RECEIVE** one  
corresponding drill body up to 5xD...

**FREE OF CHARGE!**



**SPEED UP**  
HIGH SPEED & FEED





# TOTURN™



MLP



FLP



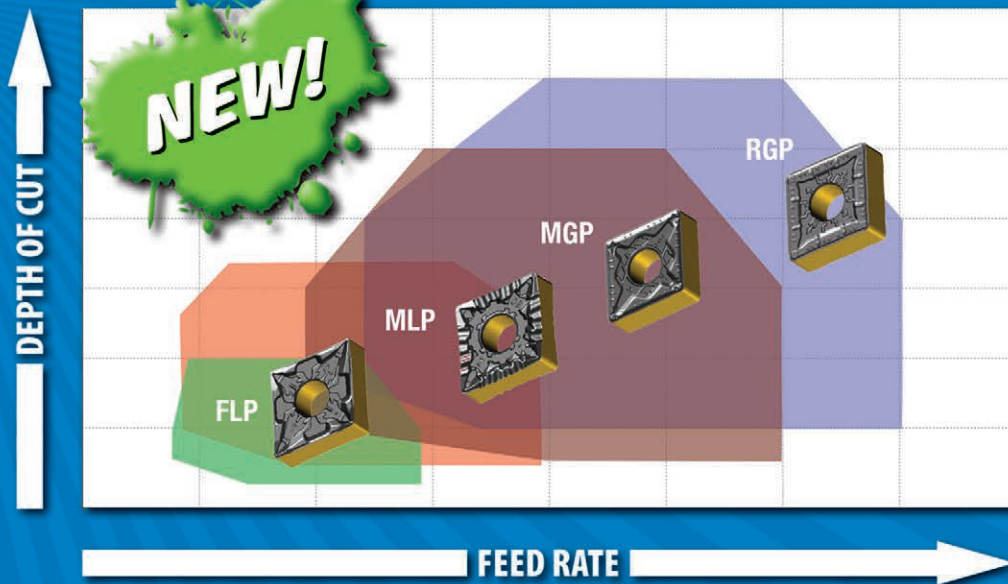
MGP



RGP

## NEW chip breakers for steel machining: FLP, MLP, MGP, RGP

- Excellent chip control performance from roughing to finishing
- Wider application range compared to previous chip breakers
- Improved stability & reliability for walk-away machining confidence
- New TT8105B, TT8115B and TT8125B CVD coatings provide 20% longer tool life



**DEAL A** (PC 235)

**PURCHASE** 40 inserts  
& **RECEIVE** 10 inserts...

**FREE OF CHARGE!**



INDUSTRY A.D.  
Member IMC Group  
**Ingersoll**  
Cutting Tools



# RHINO TURN™

Featuring:

## COOLBURST™



### Economical turning inserts now with thru-coolant holders

- Pinpoint coolant delivery from top clamp (for cooling) & bottom of holder (for chip breaking)
- Industry-leading 1,000+ "economy" inserts to choose from!
- T-type holding system with multi-directional clamping force provides 40% more stability over conventional lever lock holders, plus simple & fast indexing. No additional components required.
- Up to 50% increase in tool life under the same machining conditions
- 20% increase in cutting speed capability in difficult-to-cut materials
- Excellent chip control



Member IMC Group  
**Ingersoll**  
Cutting Tools  
INDUSTRY A.D.

**DEAL A** (PC 236A)

**PURCHASE 30 inserts & RECEIVE**

one corresponding external CoolBurst holder at a...

**50% DISCOUNT!**

**DEAL B** (PC236B)

**PURCHASE 40 inserts & RECEIVE**

one corresponding external CoolBurst holder...

**FREE OF CHARGE!**



TXJNR 2525 M0904-7B

# RHINO TURN<sup>TM</sup>

# COSTS

**A NEW double-sided mini-size insert and holder line,  
an economical alternative to standard positive  
turning and boring inserts**

- Double-sided miniature inserts (7mm IC)
- Optimized turning for low depths of cut (up to 2mm)
- Inserts feature the same cutting edge angle as standard positive inserts (zero degrees)
- Low cutting forces promote very good surface finish
- Excellent chip control at lower depths of cut
- Stable screw clamping
- Suitable for general purpose machining of small parts, especially on Swiss type automatic lathes



## **DEAL A** (PC 237A)

**PURCHASE** 30 inserts & **RECEIVE**  
one corresponding external holder...

**FREE OF CHARGE!**

## **DEAL B** (PC237B)

**PURCHASE** 40 inserts & **RECEIVE**  
one corresponding boring bar...

**FREE OF CHARGE!**



INDUSTRY A.D.  
Member IMC Group  
**Ingersoll**  
Cutting Tools



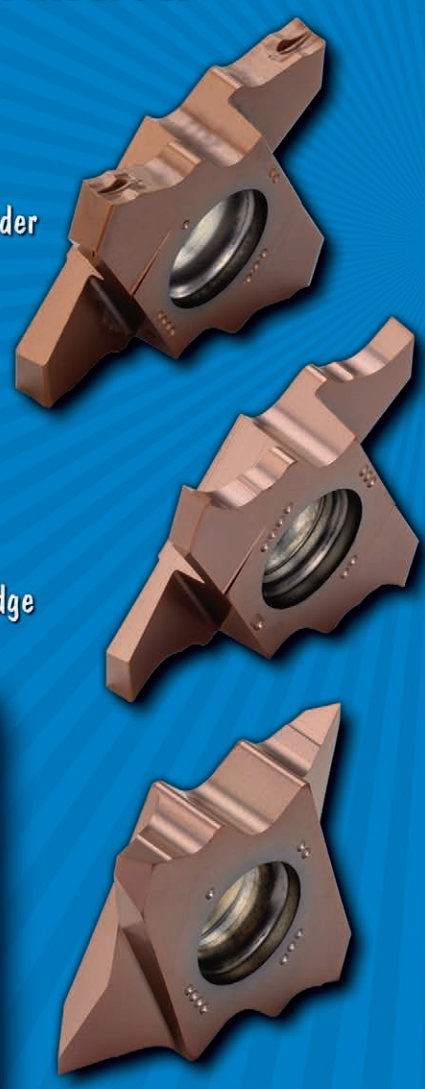


**NEW  
SIZE!**

# **GOLD FLEX™ 20**

**Grooving family expands with NEW 20mm insert & holders for swiss-type automatic lathes**

- 4-edge miniature insert for grooving, parting, turning, profiling and threading on Swiss-type lathes
- Inserts are handed so they can part or groove next to a square shoulder
- Grooving width range of .020" ~ .118" (0.5 to 3.0 mm)
- Grooving depth range of .087" ~ .197" (2.2 to 5.0 mm)
- Superior insert position repeatability and strong clamping force results in long tool life
- Holders available with or without CoolBurst high pressure internal coolant supply
- Inserts feature new PVD-coated grade TT4430 & a sharp cutting edge



**DEAL A** (PC 238A)  
**PURCHASE** 10 inserts & **RECEIVE** one corresponding holder **FREE!**



**DEAL B** (PC238B)  
**PURCHASE** 20 inserts & **RECEIVE** one corresponding CoolBurst holder **FREE!**

**SPEED UP**  
HIGH SPEED & FEED





# GOLDFLEX™ 27,34

4 cutting edges with chip former for grooving, parting, turning, and threading

- Four cutting corners for improved economy
- 34mm insert capable of parting off up to 20mm diameter solid bars
- 3 unique chip breaker shapes for excellent chip control
- Chip breaker's straight edge design enables flat bottom face machining (TQC & TQS)
- Excellent chip evacuation specifically in medium to hi-feed applications

**DEAL A** (PC 239A)

**PURCHASE** 10 inserts & **RECEIVE** one corresponding holder at **50% OFF!**



**DEAL B** (PC239B)

**PURCHASE** 20 inserts & **RECEIVE** one corresponding CoolBurst holder at **50% OFF!**



INDUSTRY A.D.  
**Ingersoll**  
Member IMC Group  
Cutting Tools



Higher  
Feed  
Rates

# CUTSPEED™

**Single-ended rigid inserts & holders for parting and deep grooving with unique adapters!**

- Rigid clamping and specialized 3-point contact area provides excellent accuracy, repeatability and durability
- Insert's increased height enhances strength & prolongs tool life
- System is capable of parting off up to 120mm (4.72") work piece diameter!
- High rigidity triangular blades and dedicated holders
  - Stable tool life and impressive cutting performance
  - Improved productivity due to hi-feed machining capability
- 1.6mm, 2mm & 3mm insert widths

## **DEAL A** (PC240A)

**PURCHASE** one block and 10 inserts  
& **RECEIVE** one blade\*..

**FREE OF CHARGE!**

## **DEAL B** (PC 240B)

**PURCHASE** 20 inserts & **RECEIVE** blade\* or holder...

**FREE OF CHARGE!**

\*excludes CoolBurst



**SPEED UP**  
HIGH SPEED & FEED



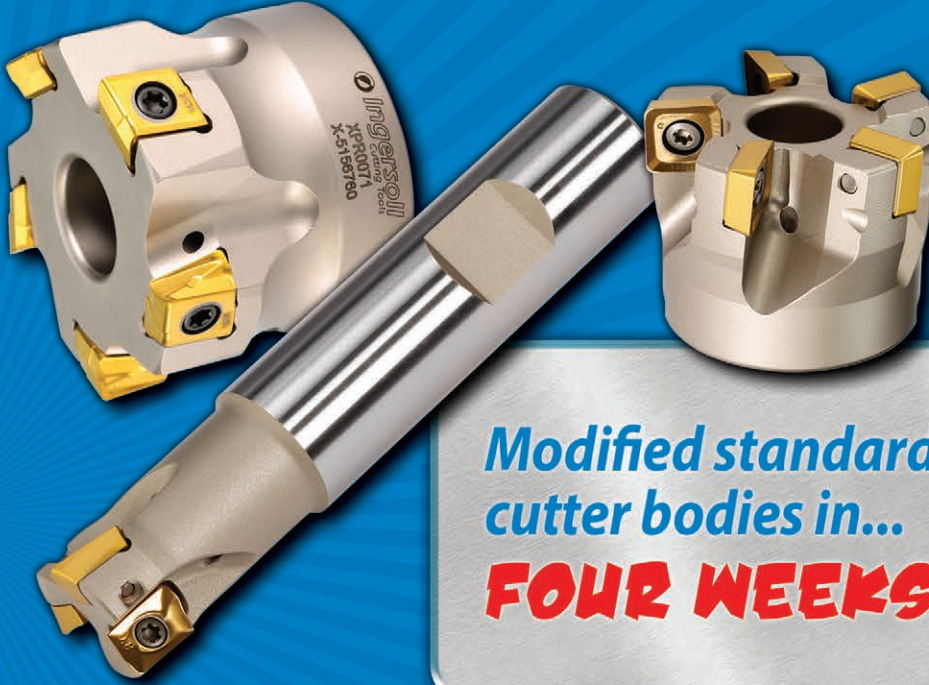
# QWIKMOD™



## EXPRESS DELIVERY PROGRAM

Quote and approval drawing in...

**...48 HOURS OR LESS!**



Modified standard  
cutter bodies in...  
**FOUR WEEKS!**



ChipSurfer modified  
standard tips in...  
**THREE WEEKS!**



Scan the QR code or contact your  
Ingersoll distributor or direct sales  
representative for more details  
and qualifying products

# SPEEDUR

HIGH SPEED & FEED

**Marketing & Technology Center**

845 S. Lyford Road

Rockford, IL 61108-2749 U.S.A.

Tel: 815.387.6600

Fax: 815.387.6968

Email: [info@ingersoll-imc.com](mailto:info@ingersoll-imc.com)

Internet: [www.ingersoll-imc.com](http://www.ingersoll-imc.com)



Member IMC Group  
**Ingersoll**  
Cutting Tools  
INDUSTRY 4.0

Ingersoll Cutting Tools reserves the right to limit quantities, to change the terms of the promotion without notice, and to refuse an order that does not conform with the terms and conditions contained or implied herein. Offer good until July 31st, 2022, unless otherwise noted, or while supplies last. Prices exclude applicable taxes. All promotions based on the price list in effect at the time the order is placed. Distributor orders must be drop shipped to the end user. Limit of 5 of the same product to the same end user.

PRO-116-3  
2930917  
Printed in U.S.A.